



Redistrict...Rezone...Realign ...Real-time

Who are we?

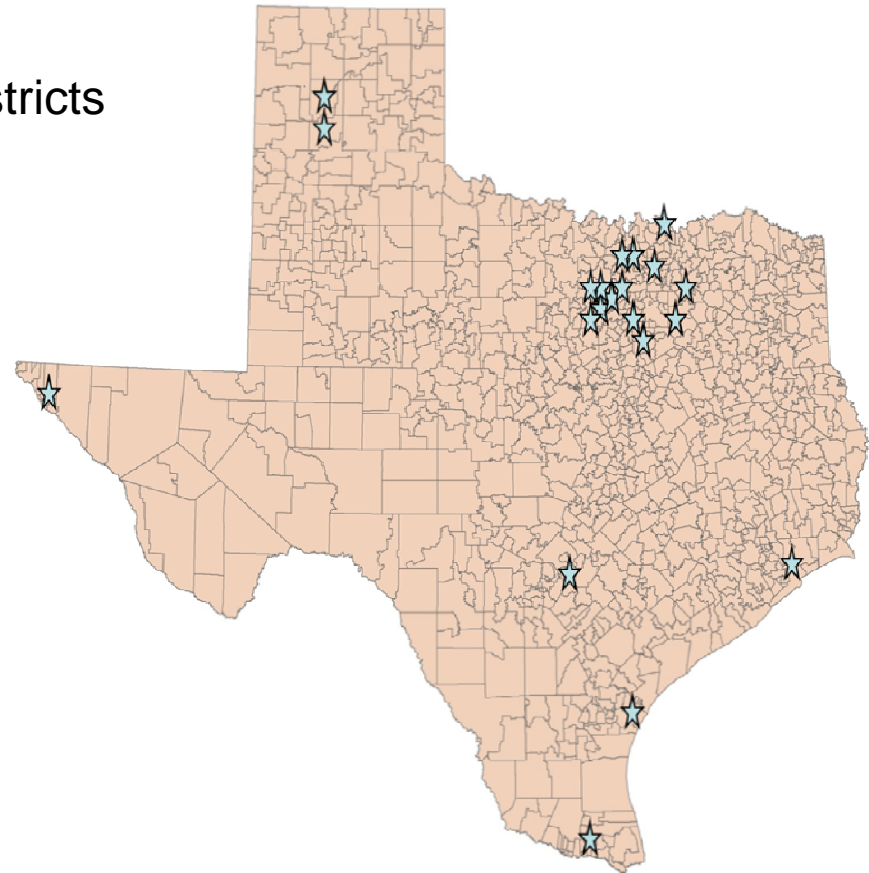
Demographics...Research...Planning...GIS

Templeton Demographics is... School Districts

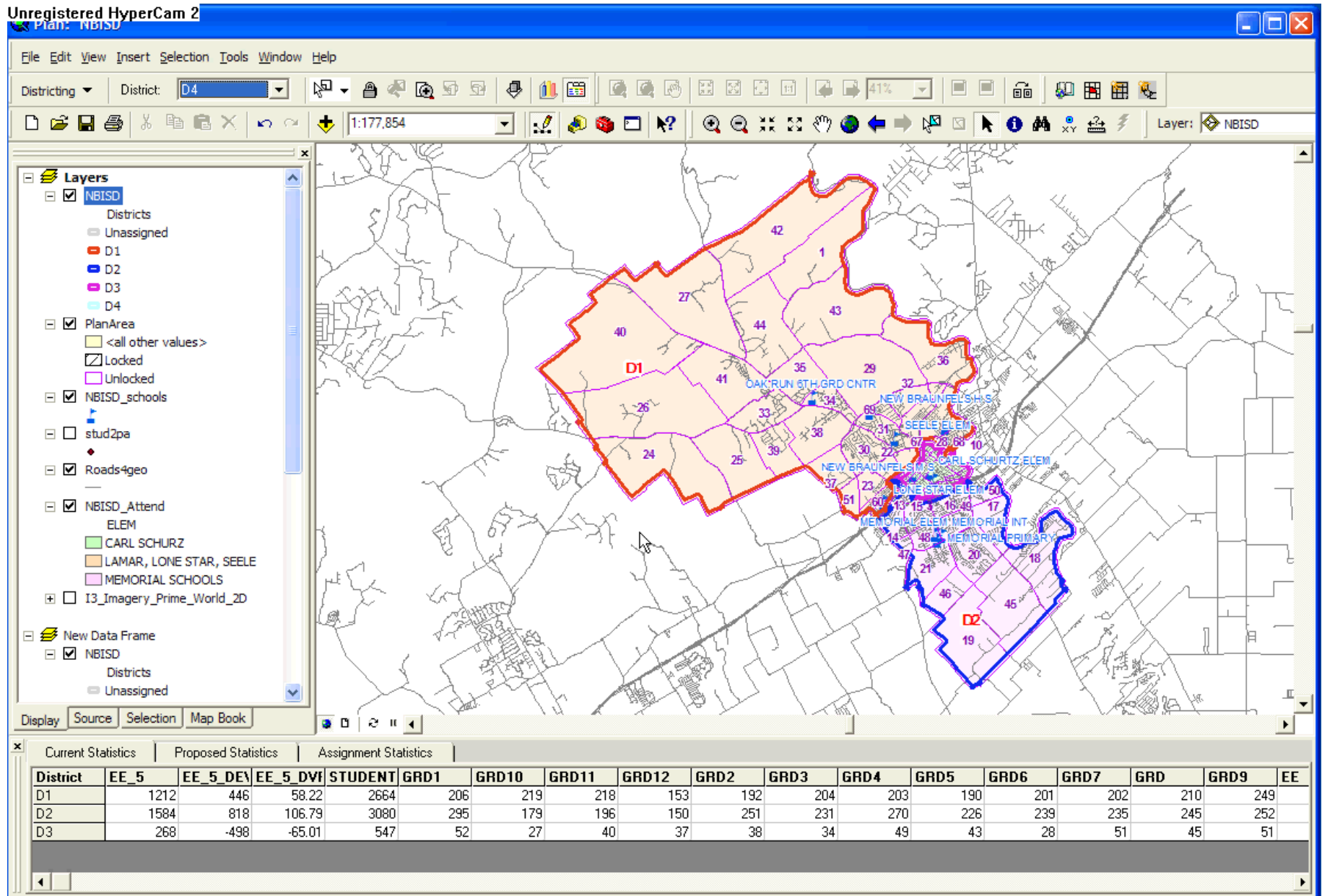
- Demographic Studies
- Boundary Planning
- Facility Studies
- Build-out Analysis
- Enrollment Forecasting

RDS is ...not school districts

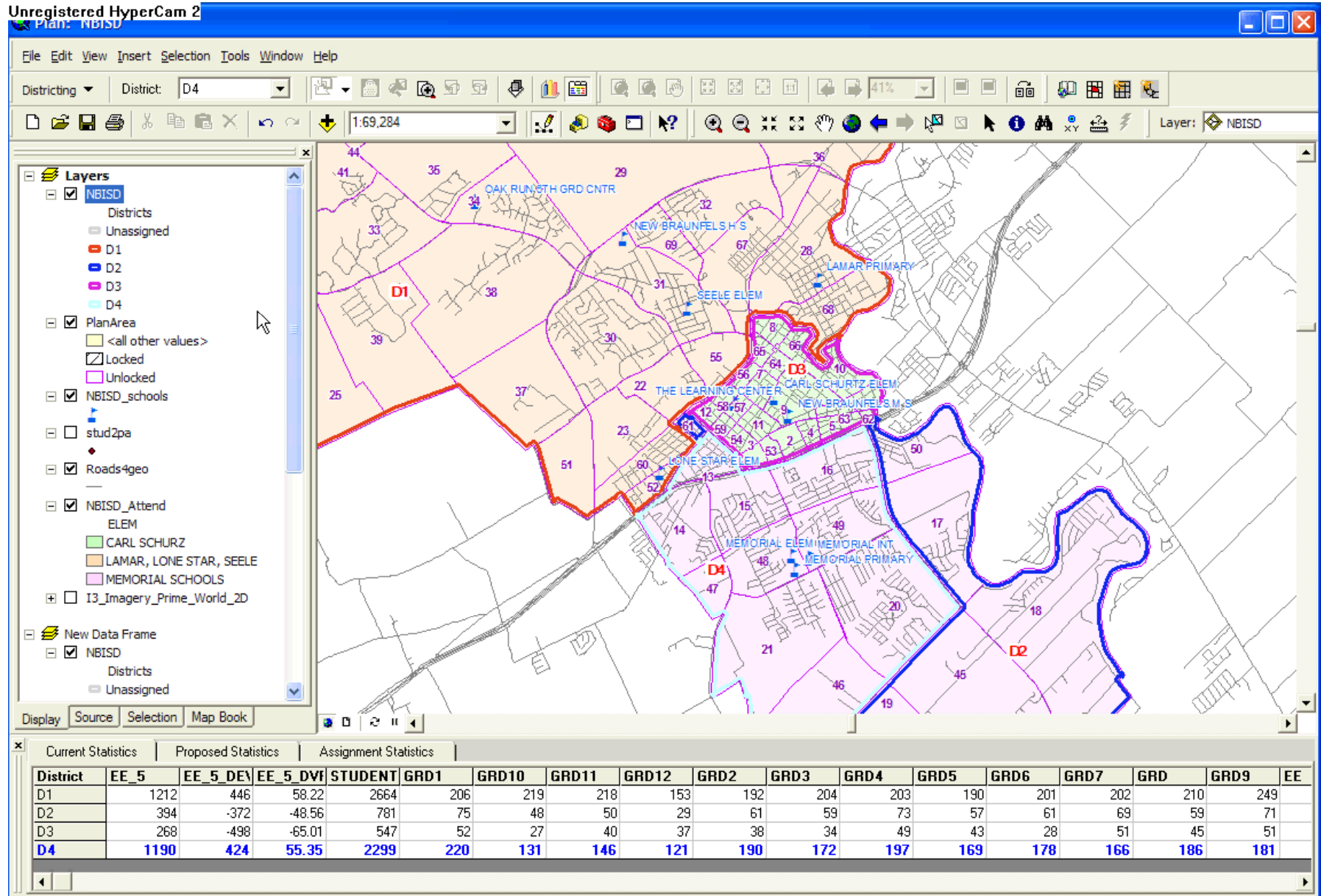
- Major Investment Studies
- Independent Economic Analysis
- Market Analysis
- Site Selection
- GIS Support



Boundary Planning



Boundary Planning





Redistricting for School Boundaries Demonstration

Calendar

Texas big Census winner this decade

Updated 3/25/2010 11:38 AM | Comments  66 | Recommend  2 | E-mail | Save | Print | Reprints & F

By [Haya El Nasser](#), USA TODAY

The decade that opened with booming growth in the Sun Belt is closing on a quieter but similar note despite the recession's toll on some of the USA's fastest-growing areas, according to Census estimates released Tuesday.

"Texas, so far, is the big winner this decade," says William Frey, demographer at the [Brookings Institution](#). "Big Texas metros have done well because they avoided a lot of the pitfalls of the housing boom and bust."

Six Texas counties are among the 25 fastest-growing from 2000 to 2009: [Rockwall](#), Williamson, Collin, Hays, Fort Bend and Montgomery.

2008	 FALL 2008 Recruitment began for local census jobs for early census operations
2009	 SPRING 2009 Census employees went door-to-door to update address list nationwide
	 FALL 2009 Recruitment began for census takers needed for peak workload in 2010
2010	 MARCH 2010 Census forms are mailed or delivered to households
	 APRIL 2010 National Census Day—use this day as a point of reference for sending your completed forms back in the mail
	 APRIL - JULY 2010 Census takers visit households that did not return a form by mail
	 DECEMBER 2010 By law, the Census Bureau delivers population information to the President for apportionment
2011	 MARCH 2011 By law, the Census Bureau completes delivery of redistricting data to states

Decennial Census

- In Census 2000, the census used 2 forms
 1. “short” form – asked for basic demographic and housing information, such as age, sex, race, how many people lived in the housing unit, and if the housing unit was owned or rented by the resident
 2. “long” form – collected the same information as the short form but also collected more in-depth information such as income, education, and language spoken at home
- Only a small portion of the population, called a sample, received the long form. (about 1 in 7)

2010 Census and American Community Survey

- 2010 Census will focus on counting the U.S. population
- The sample data are now collected in the ACS
- Puerto Rico is the only U.S. territory where the ACS is conducted
- 2010 Census will have a long form for U.S. territories such as Guam and U.S. Virgin Islands
- Same “short form” questions on the ACS

American Community Survey

Methodology

- Sample includes about 3 million addresses each year

US Population, July 1, 2009 – 307,006,550

Texas Population, July 1, 2009 – 24,782,302

- Three modes of data collection
 - mail
 - phone
 - personal visit
- Data are collected continuously throughout the year

American Community Survey

Period Estimates

- ACS estimates are period estimates, describing the average characteristics over a specified period
- Contrast with point-in-time estimates that describe the characteristics of an area on a specific date
- 1-year, 3-year, and 5-year estimates will be released for geographic areas that meet specific population thresholds

2008 ACS 1-Year

- Data collected between January 2008 and December 2008
- Geographies > 65,000 (Arlington ISD)
- Smaller sample size than 3-year
- More current than 3-year estimates

2006-8 ACS 3-Year

- Data collected between January 2006 and December 2008
- Geographies > 20,000 (Carroll ISD)
- larger sample size than 1-year
- Less current than 1-year estimates

2005-9 ACS 5-Year

- Data collected between January 2005 and December 2009
- Geographies < 20,000 (Aledo ISD)
- Available late 2010

What is the American Community Survey?



Social Characteristics

- Place of Birth
- Citizenship
- Year of Entry
- Language Spoken at Home
- Ancestry/Tribal Affiliation
- Education
- Marital Status
- Fertility
- Grandparents as caregivers
- Disability status
- Veterans

Housing Characteristics

- Tenure
- Occupancy & Structure
- Housing Value
- Taxes & Insurance
- Utilities
- Mortgage/Monthly Rent

Economic Characteristics

- Income
- Benefits
- Employment Status
- Occupation
- Industry
- Commuting to Work
- Place of Work

Demographic Characteristics

- Sex
- Age
- Race
- Hispanic Origin

American Community Survey

Data Products Release Schedule

Data Product	Population Size of Area	Data released in:							
		2006	2007	2008	2009	2010	2011	2012	2013
1-Year Estimates for Data Collected in:	65,000+	2005	2006	2007	2008	2009	2010	2011	2012
3-Year Estimates for Data Collected in:	20,000+			2005-2007	2006-2008	2007-2009	2008-2010	2009-2011	2010-2012
5-Year Estimates for Data Collected in:	All Areas*					2005-2009	2006-2010	2007-2011	2008-2012

* Five-year estimates will be available for areas as small as census tracts and block groups.

Source: US Census Bureau



RESEARCH & DEMOGRAPHIC
SOLUTIONS



TEMPLETON
DEMOGRAPHICS

2011



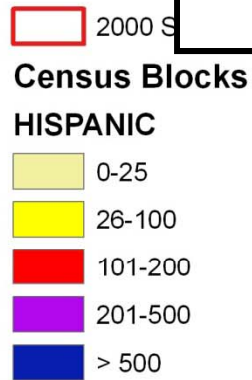
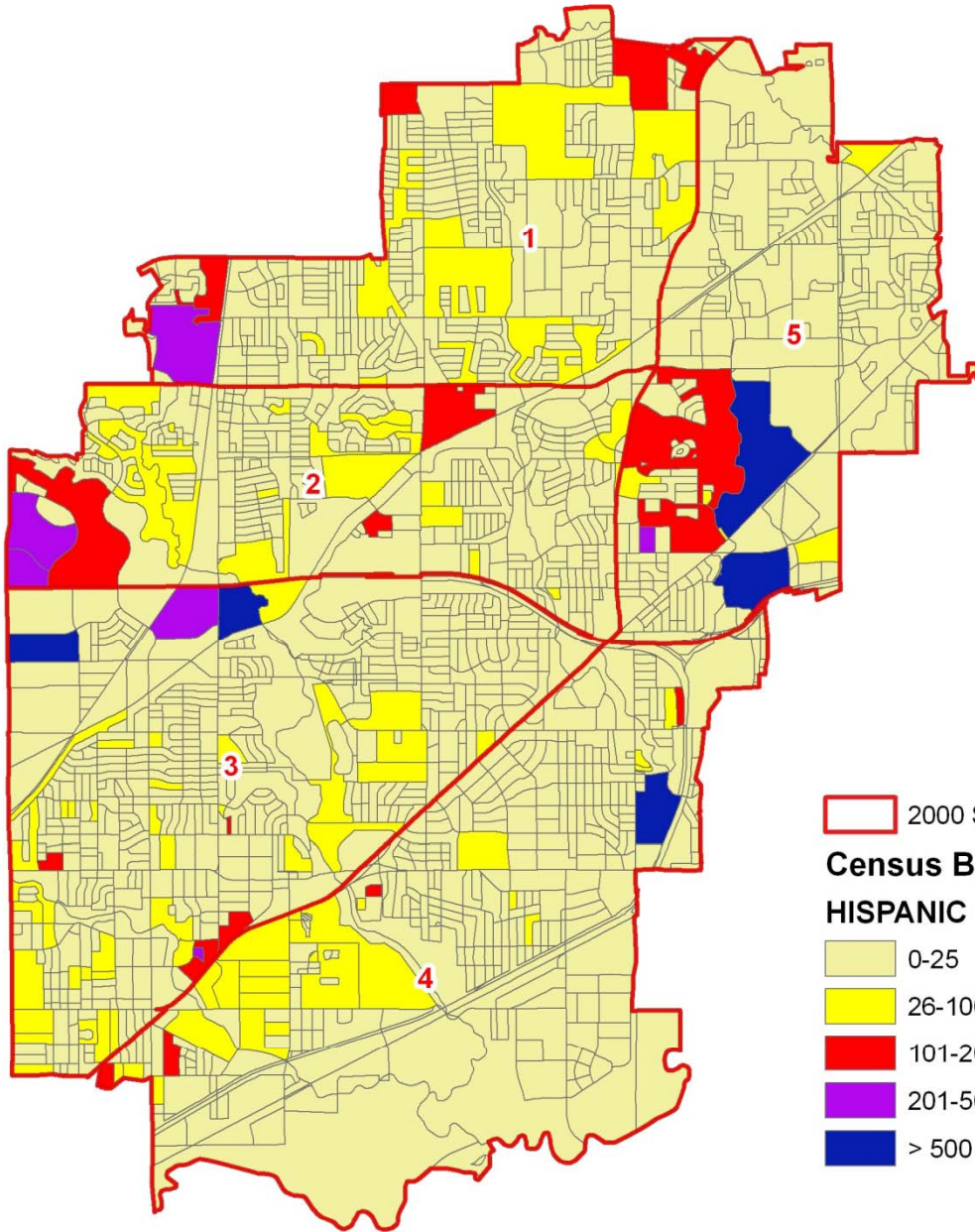
MARCH 2011

By law, the Census Bureau completes delivery of redistricting data to states

- City Council Districts
- Voter Precincts
- County Commissioners
- School Boards

Review Existing Demographics and Changes

Understand How the Precincts/Districts Have Changed



DISTRICT	TOTAL	WHITE	BLACK	AMERICAN INDIAN	ASIAN	PACIFIC / HAWAIIAN	OTHER RACE	MULTI-RACIAL	HISPANIC	NON-HISPANIC
2000 TOTAL POPULATION										
2010 TOTAL POPULATION										
1	28,492	23,768	714	138	819	47	24	408	2,574	25,918
	44,431	36,986	1,310	190	1,303	60	31	650	3,901	40,530
2	15,939	13,218	596	52	484	13	7	242	1,327	14,612
	21,909	17,131	635	130	1,047	32	34	280	2,620	19,289
3	20,327	13,952	1,474	94	800	45	12	354	3,596	16,731
	32,934	24,548	704	141	1,798	35	37	404	5,267	27,667
4	26,293	17,271	920	114	1,944	30	30	406	5,578	20,715
	-6,641	-7,277	216	-27	146	-5	-7	2	311	-6,952
5	15,892	11,305	456	107	754	41	11	256	2,962	12,930
	9,177	5,798	267	64	812	23	3	172	2,038	7,139
TOTAL	-6,715	-5,507	-189	-43	58	-18	-8	-84	-924	-5,791
	19,453	15,857	583	78	520	35	4	317	2,059	17,394
TOTAL	18,393	14,387	589	93	524	44	22	225	2,509	15,884
	-1,060	-1,470	6	15	4	9	18	-92	450	-1,510
TOTAL	118,680	92,609	3,092	594	4,938	190	110	1,665	15,482	103,198
	140,530	105,525	5,195	685	6,430	234	132	2,087	20,242	120,288
TOTAL	21,850	12,916	2,103	91	1,492	44	22	422	4,760	17,090



Redistricting Demonstration



Thanks

Mike Sudac

msudac@tdemographics.com

Rocky Gardiner

rgardiner@rdsplanning.com